


P4 Singapore Math

Factors and Multiples ②

$+$ $-$ \times \div

Name: _____ Date: _____



What are the keywords in the question?
Are you fulfilling what the question is asking for?

Key Words:

E.g.
- "sum of.." "
- "smallest even number"

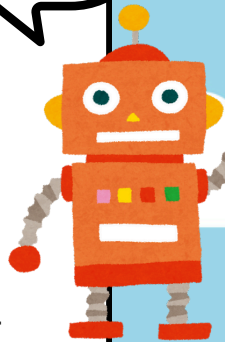
1) List all the factors of 12. _____

2) What are the common factors of 8 and 16? _____

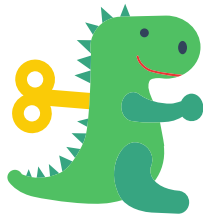
3) Write down all the factors of 24. _____

4) Find the sum of all the factors of 36. _____

5) What are the common factors of 18 and 30? _____



6) What is the smallest even number that has exactly 3 factors? _____



Hint: Start from the smallest possible even number you know and check if it has 3 factors. If it does not, try the next smallest possible even number and check if it has 3.

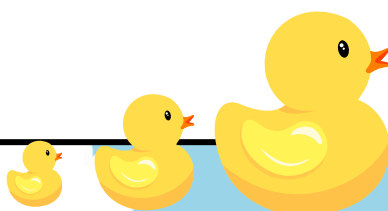
7) Find the sum of all the common factors of 12 and 18.

8) What are all the common factors of 15, 20, and 25?

9) 9, 18, 27, 36, 45 ... are multiples of _____

10) What is the smallest common multiple of 4, 6, and 9?

Have you checked that you fulfilled every part of the question asked?



11) The fourth multiple of 7 is _____

12) Write down the first three multiples of 6. _____

13) The first two common multiples of 3, 6, and 9 are _____

Hint:

What are the multiples of 3, 6 and 9?

List them first. Then, circle the ones that are common.

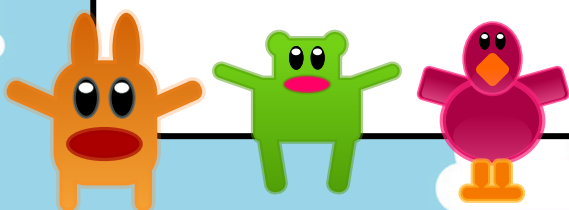
Find the first 2 common multiples.



14) Find the sum of the first five multiples of 2. _____

15) The first two common multiples of 4 and 10 are

Have you checked your
work?



ANSWER KEY

1)	1, 2, 3, 4, 6, 12	9)	9
2)	1, 2, 4, 8	10)	36
3)	1, 2, 3, 4, 6, 8, 12, 24	11)	28 $7 \times 4 = 28$
4)	91 $1 + 2 + 3 + 4 + 6 + 9 + 12 + 18 + 36 = 91$	12)	6, 12, 18
5)	1, 2, 3, 6	13)	18 and 36
6)	4 It has three factors: 1, 2, and 4.	14)	30 $2 + 4 + 6 + 8 + 10 = 30$
7)	12 $1 + 2 + 3 + 6 = 12$	15)	20, 40
8)	1 and 5		